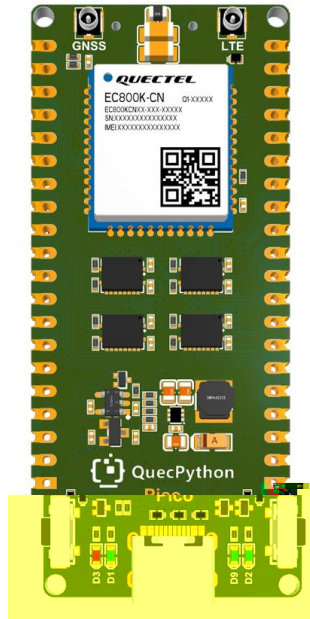




1

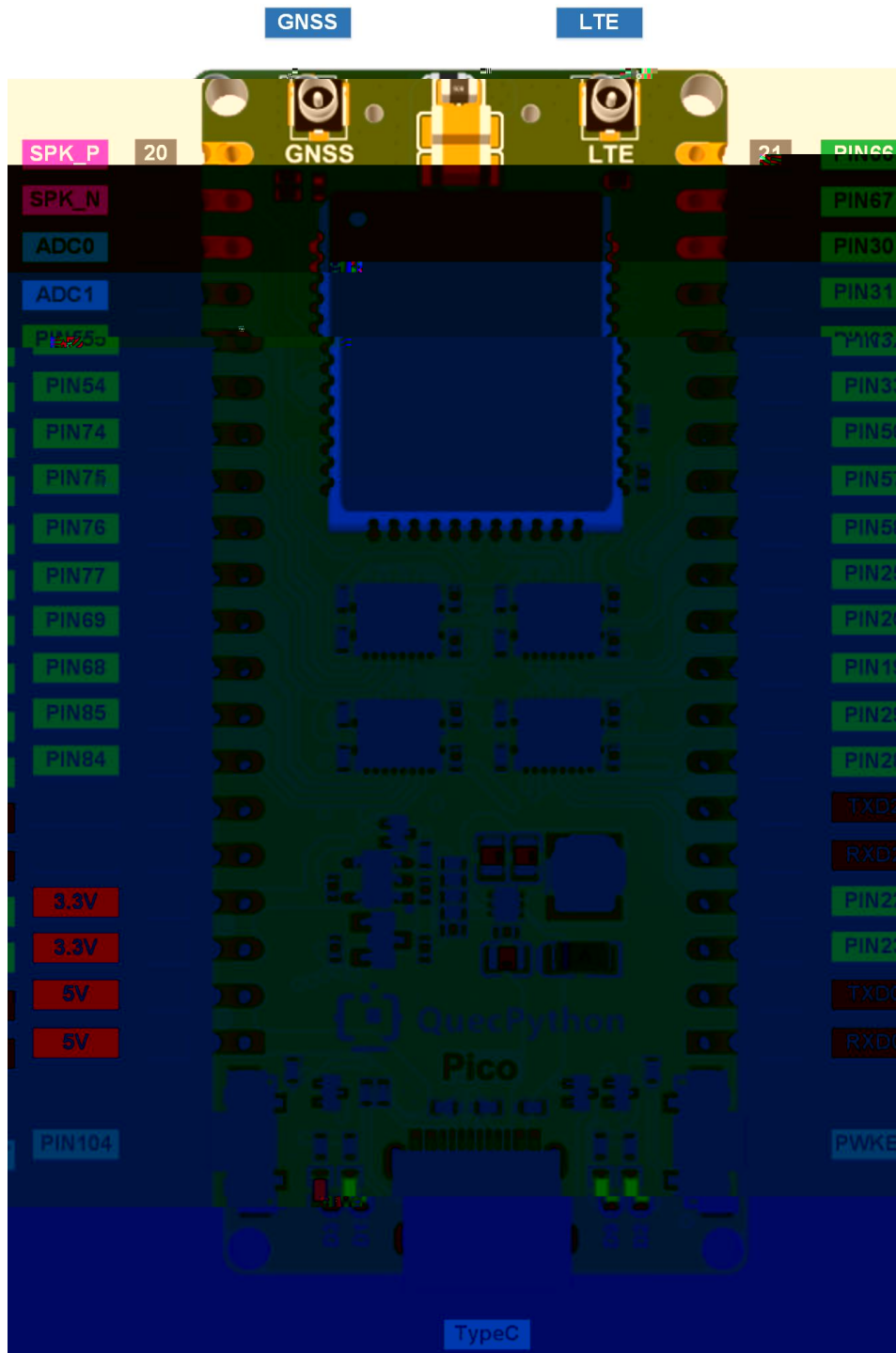
不



- 
- 
- 
- 
- 
- 
- 

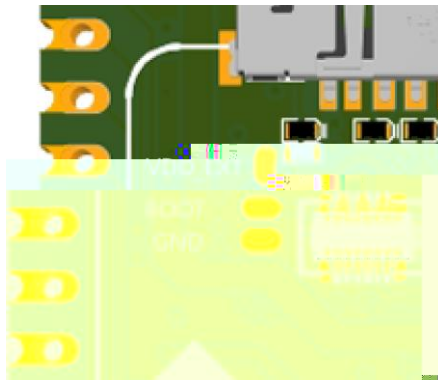
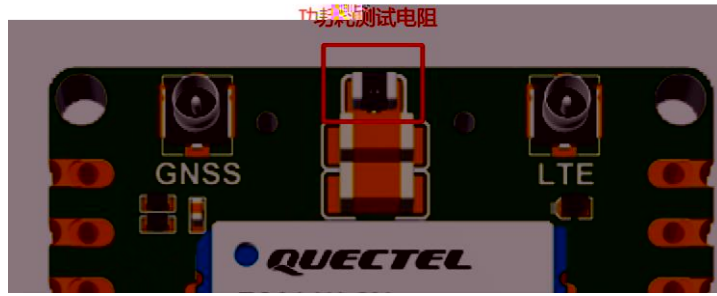
与

•  
•  
2

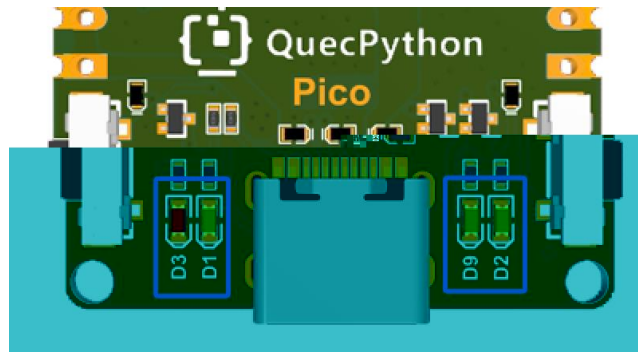








不

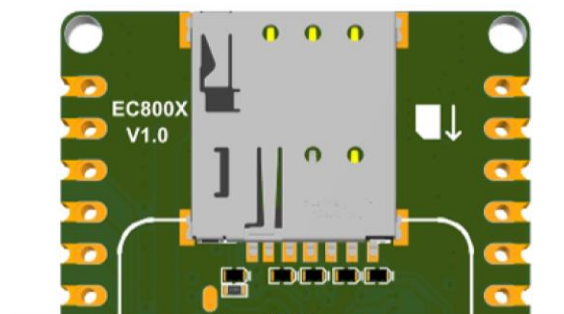


不

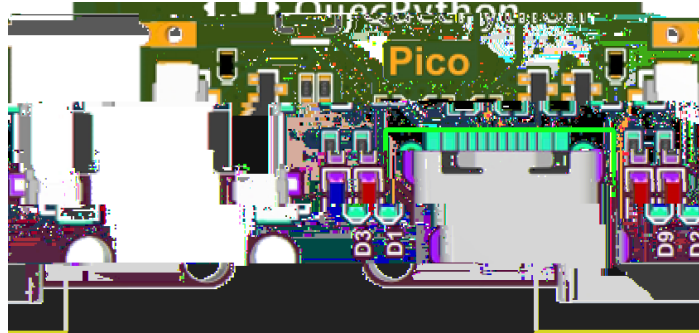
		→

不

### 3 SIM



## 4 USB

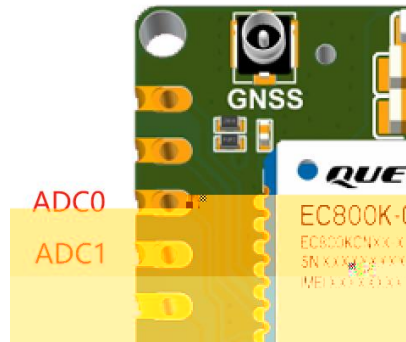


## 5 SPK



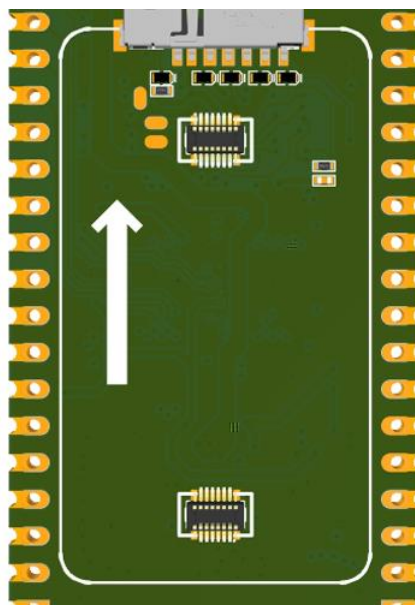
- 不
- 不

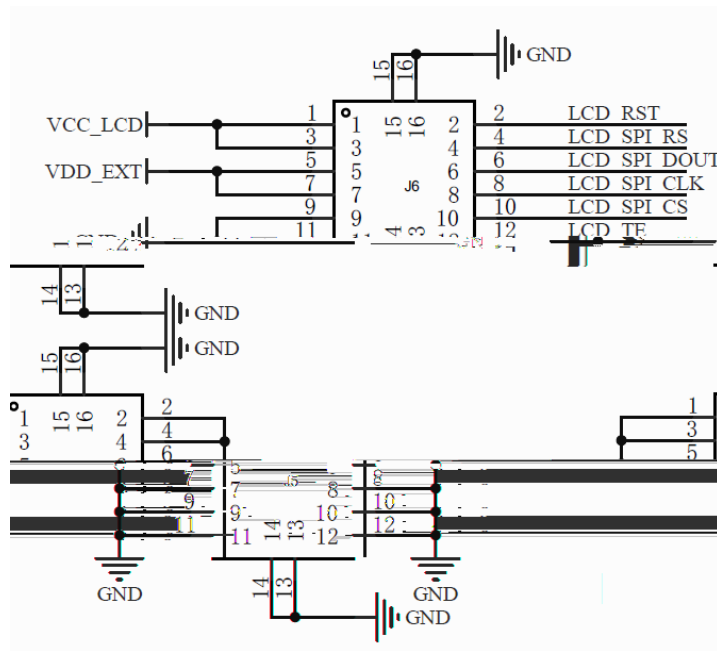
## 6 ADC



参数	最小值	典型值	最大值	单位
ADC0 电压	0	-	1.2	V
ADC1 电压	0	-	1.2	V
ADC 分辨率	-	-	12	位

## 7 LCD





NO.	Item	Contents	Unit
1	LCD Size	1.47	inch
2	Display Mode	Normally black	-
3	Resolution	172(H)RGB x320(V)	pixels
4	Pixel pitch	0.0337(H) x 0.1011(V)	mm
5	Active area	17.3892(H) x 32.352(V)	mm
6	Module size	40.28(H) x 26.288(V) x 1.42 (D)	mm

		Pixel Arrangement	RGB-GRN-GRN-GRN-GRN	
	8	Interface	4 Line SPI	-
	9	Display Colors	262K	colors
	10	Drive IC	ST7789V3	-
	11	Luminance(cd/m <sup>2</sup> )	350 (1YP)	Cd/m <sup>2</sup>
ge	12	Viewing Direction	All View	Best ima
	13	Backlight	3 White LED Parallel	-
	14	Operating Temp.	-20°C ~ +70°C	°C
°C	15	Storage Temp.	-30°C ~ +80°C	°C
g	16	Weight	2.7	

# 8

## 与 与

引脚名	引脚号	I/O	描述	备注
ANT_MAIN	35	AIO	主天线接口	50 Ω 特性阻抗。

### 备注

模块支持 Wi-Fi Scan 功能。由于共用主天线接口，两种功能不可同时使用，时分复用，Wi-Fi Scan 只接收不发送。

频段	发送 (dBm)	接收 (dBm)
LTE-TDD B34	1970~1980	2170~2170
LTE-TDD B38	1710~1735	1805~1830
LTE-TDD B39	824~829	869~894
LTE-TDD B40	880~915	925~960
LTE-TDD B41	2010~2025	2010~2025
LTE-TDD B38	2570~2620	2570~2620
LTE-TDD B39	1880~1920	1880~1920
LTE-TDD B40	2300~2400	2300~2400
LTE-TDD B41	2535~2675	2535~2675

频段	最大值	最小值
LTE-FDD B1/B3/B5/B8	23 dBm ±2 dB	< -39 dBm
LTE-TDD B34/B38/B39/B40/B41	23 dBm ±2 dB	< -39 dBm

频段	接收灵敏度（典型值）（dBm）			3GPP 要求 （主集 + 分集）
	主集	分集	主集 + 分集	
LTE-FDD B1 (10 MHz)	-99.5 dBm	-	-	-96.3 dBm
LTE-FDD B3 (10 MHz)	-99.0 dBm	-	-	-93.3 dBm
LTE-FDD B5 (10 MHz)	-98.5 dBm	-	-	-94.3 dBm
LTE-FDD B8 (10 MHz)	-99.0 dBm	-	-	-93.3 dBm
LTE-TDD B34 (10 MHz)	-100.0 dBm	-	-	-96.3 dBm
LTE-TDD B38 (10 MHz)	-99.0 dBm	-	-	-96.3 dBm
LTE-TDD B39 (10 MHz)	-100.0 dBm	-	-	-96.3 dBm
LTE-TDD B40 (10 MHz)	-100.5 dBm	-	-	-96.3 dBm
LTE-TDD B41 (10 MHz)	-99.0 dBm	-	-	-94.3 dBm

- 
- 
- 

传

不

		传

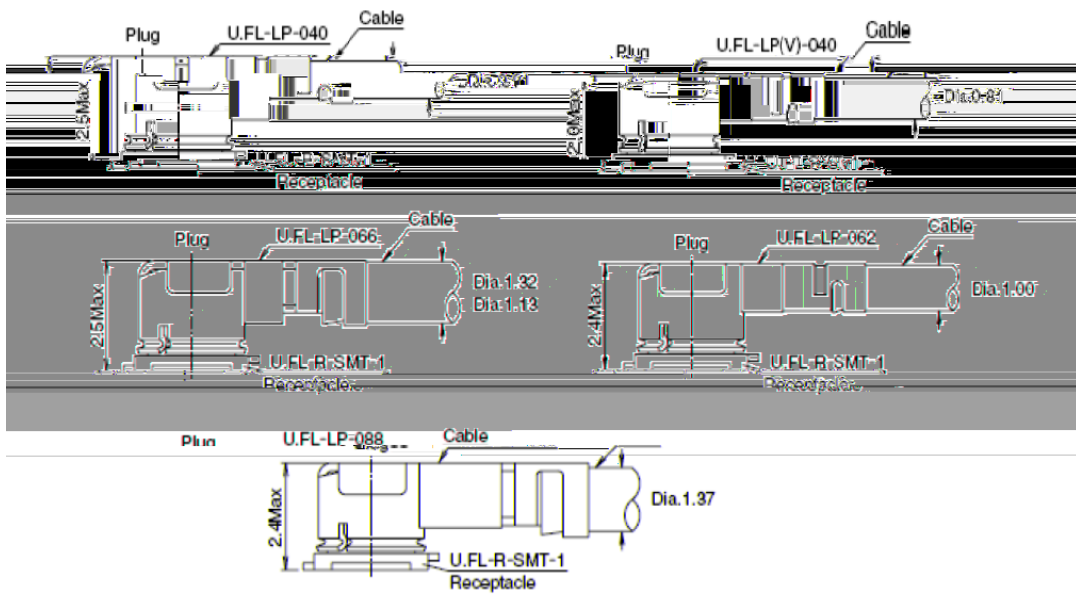


3.4	4	5	4	4	
2.0mm Max. (1.9mm Nom.)	2.4mm Max. (2.3mm Nom.)	2.4mm Max. (2.3mm Nom.)	2.5mm Max. (2.4mm Nom.)	2.5mm Max. (2.4mm Nom.)	
Dia: 1.32mm Coaxial cable	Dia: 1mm Coaxial cable	Dia: 1.27mm Coaxial cable	Dia: 1.13mm and 1.32mm Coaxial cable	Dia: 1.13mm and 1.32mm Coaxial cable	
59.1	34.8	45.5	71.7		
	YES				
				Weight (mg):	53.7
				RoHS:	

U.FL-LP 连接线系列

传

不



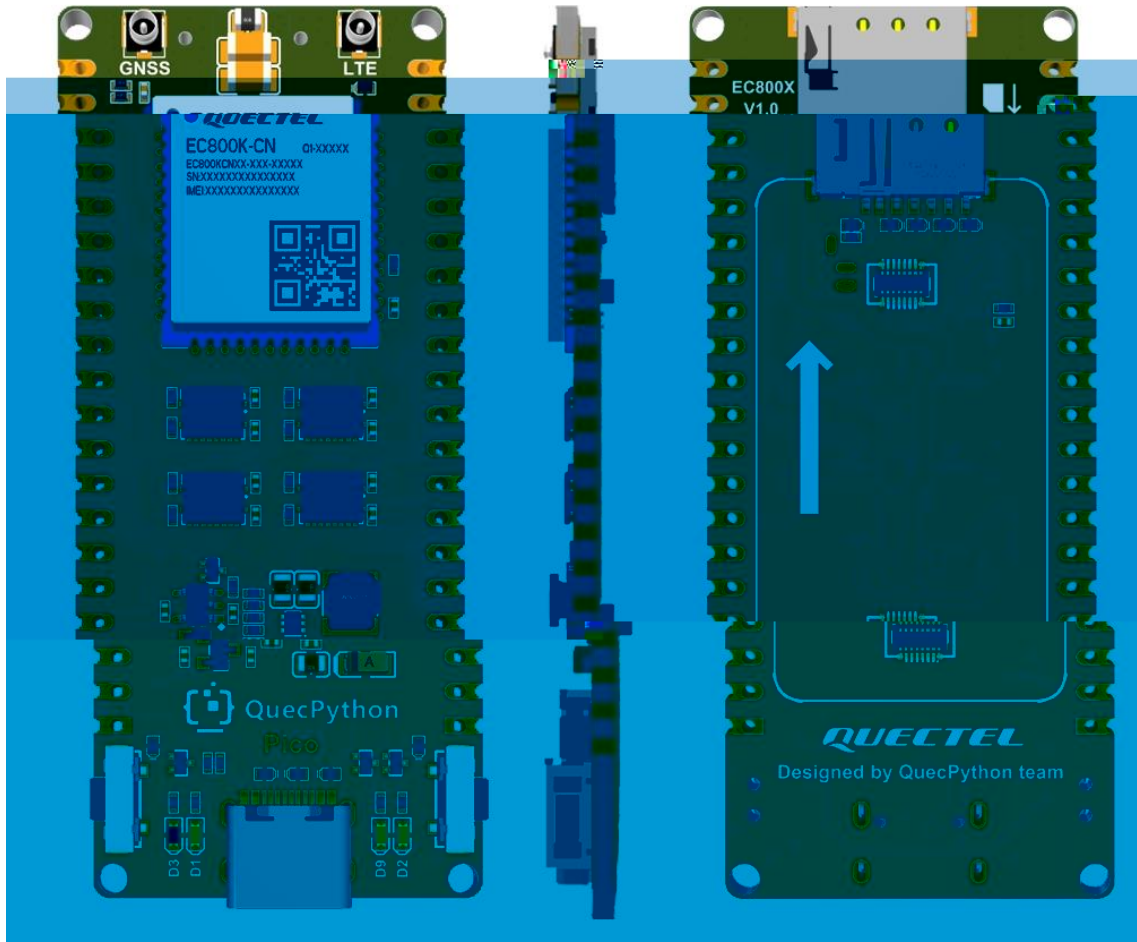
安装尺寸 (单位: 毫米)

传

传







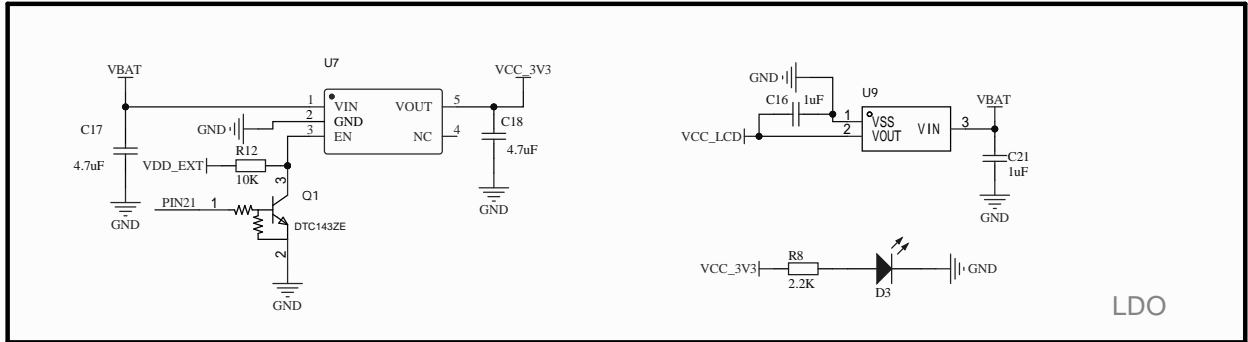
11

12

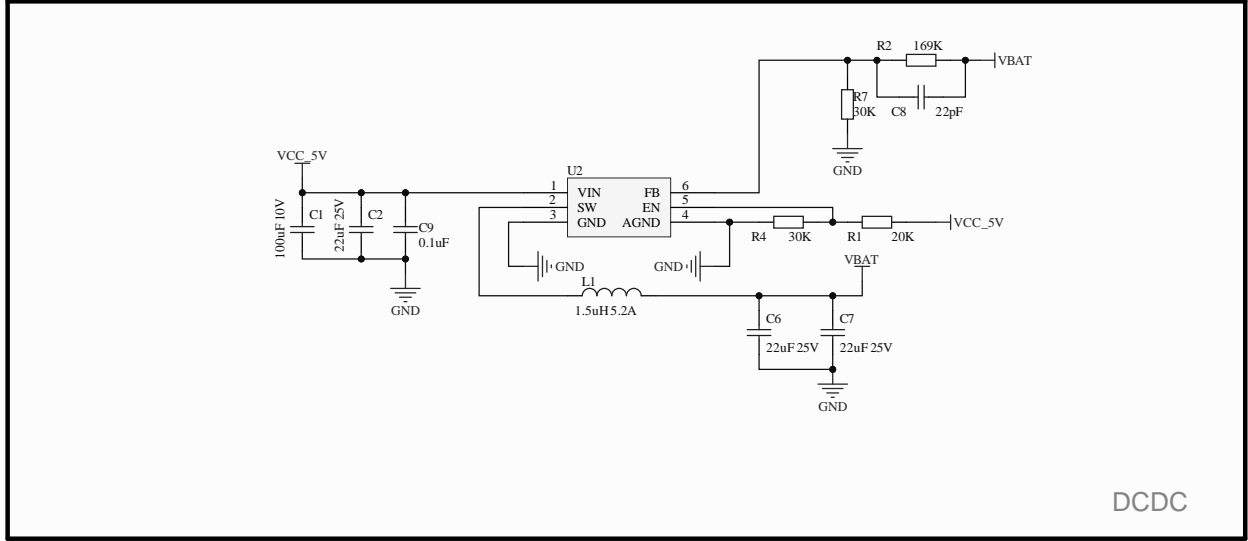








LDO



DCDC

1

2

3

4

5

6

A

B

C

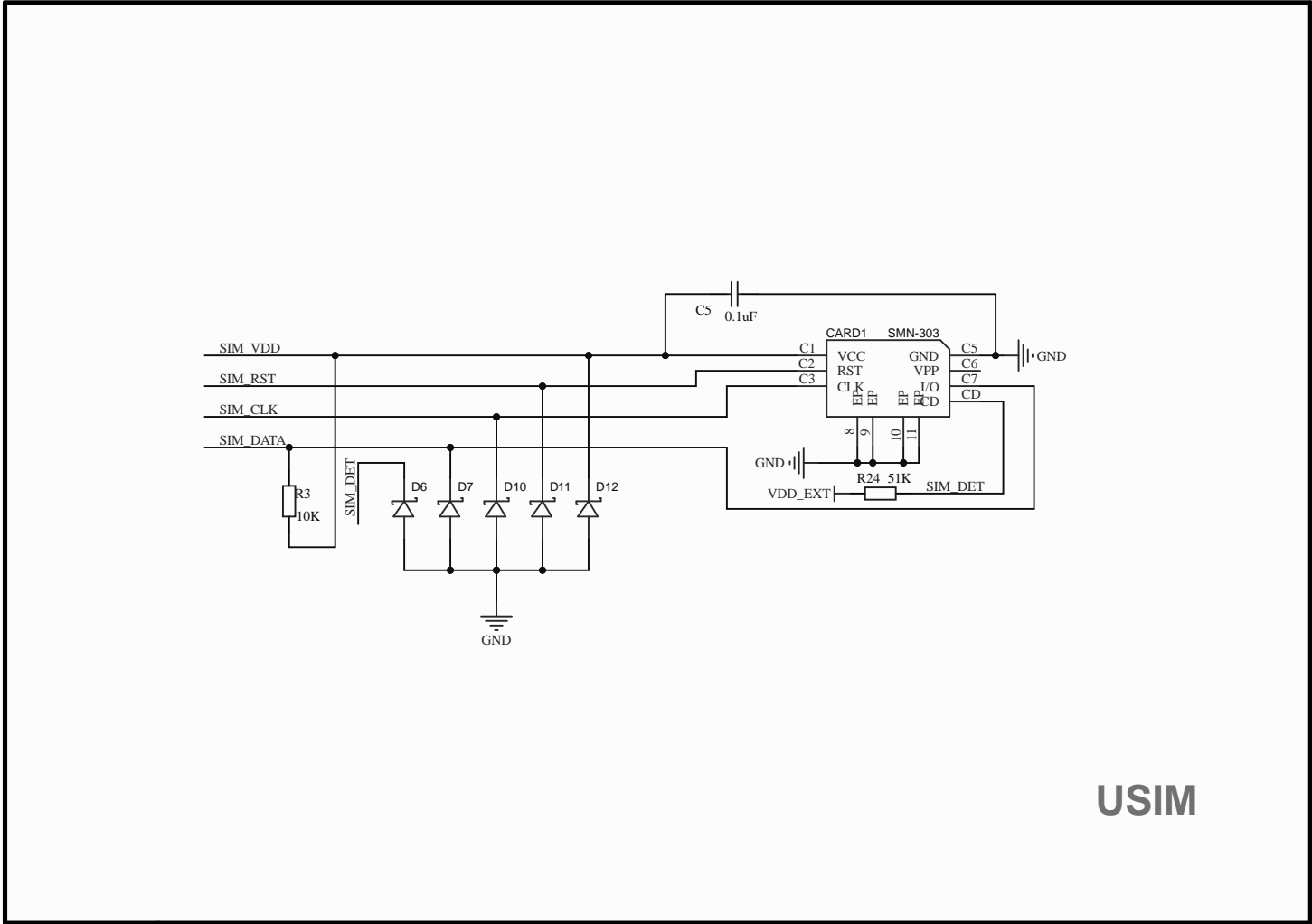
D

A

B

C

D



USIM

1

2

3

4

5

6